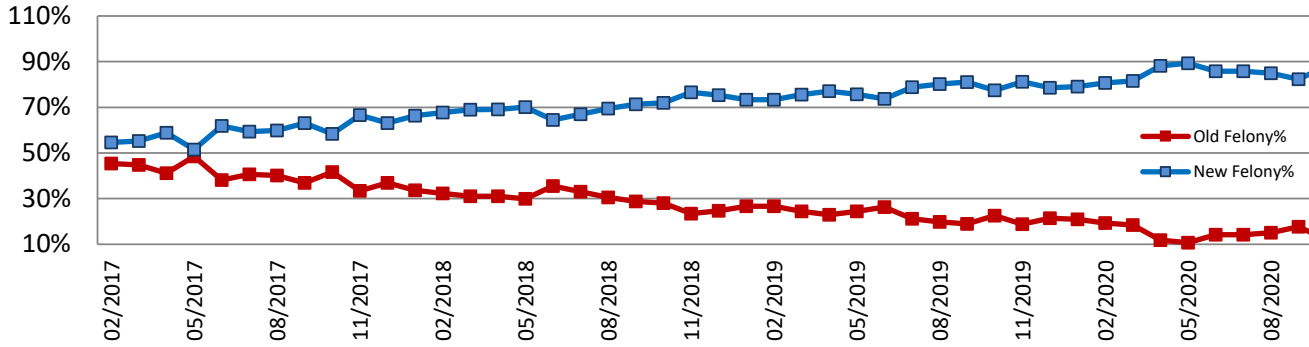


**INDIANA DEPARTMENT OF CORRECTION
HEA 1006: Supplemental Report for October 2020**

Adult Admission Trend: Old vs New Felony Levels

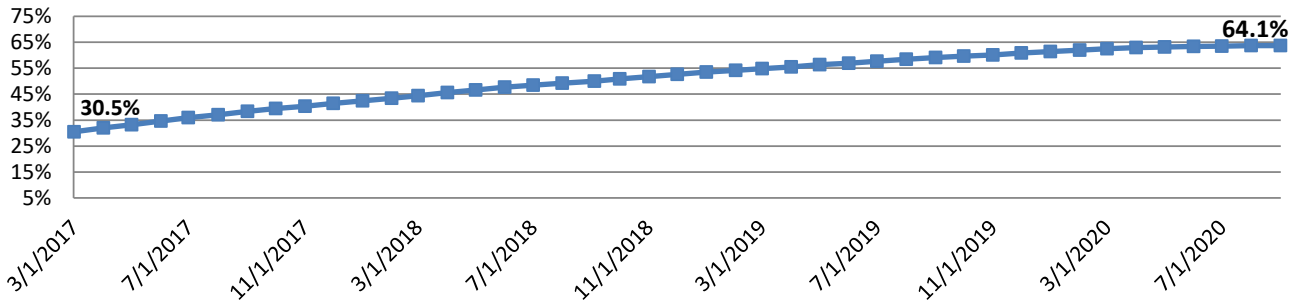
(Chart does not include Murder)



Month	Old	New	Murder	Total	Old Felony%	New Felony%
10/2020	66	478	2	546	12.1%	87.9%
11/2020	63	416	7	486	13.2%	86.8%

Facility Population: New Felony Levels

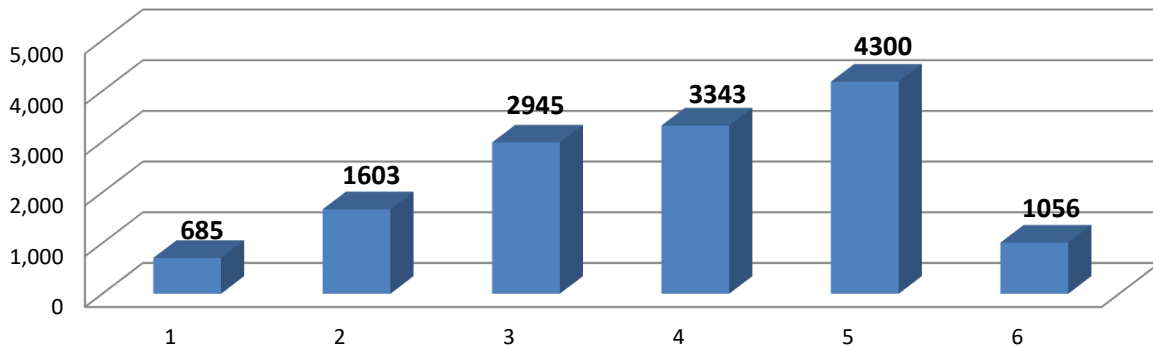
(Chart does not include Murder)



Date	Old	New	Murder	Total	Old Felony%	New Felony%
11/1/2020	7,651	13,938	2,578	24,167	35.4%	64.6%
12/1/2020	7,506	13,866	2,572	23,944	35.1%	64.9%

Distribution of New Felony Levels by Most Serious Offense

as of 12/01/2020

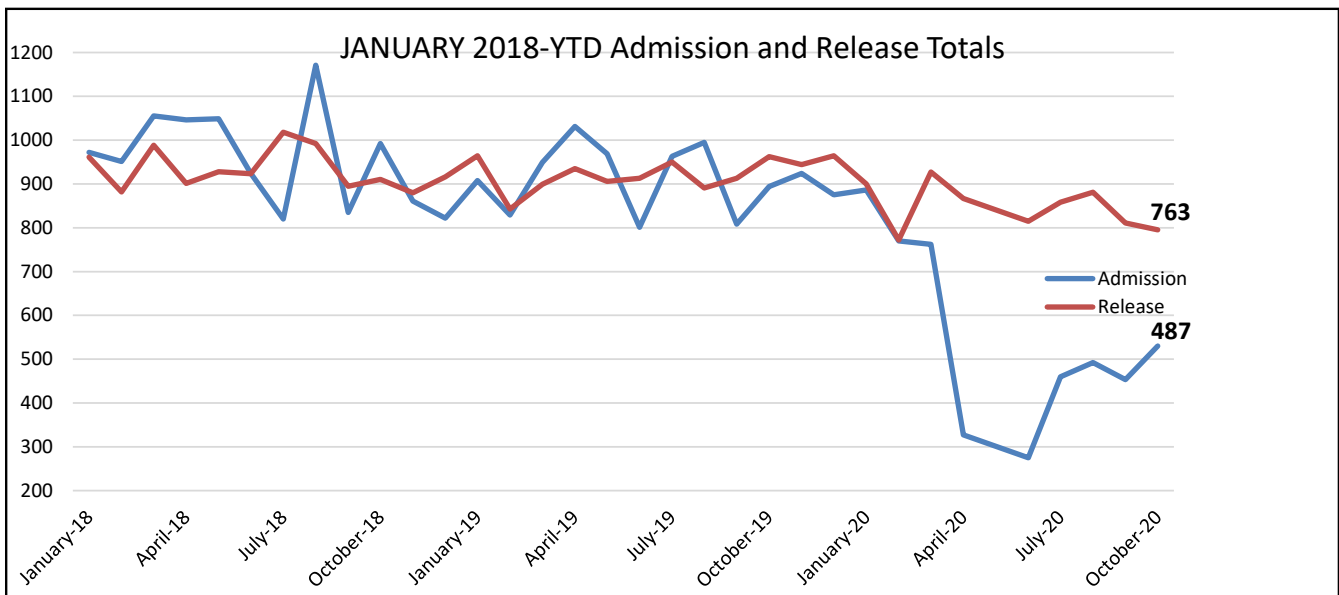


Admissions:
*** Missing Sentencing Data/ HO***

Comparisons include grouping
Old A-D Offenses Vs. New 1-6 Offenses

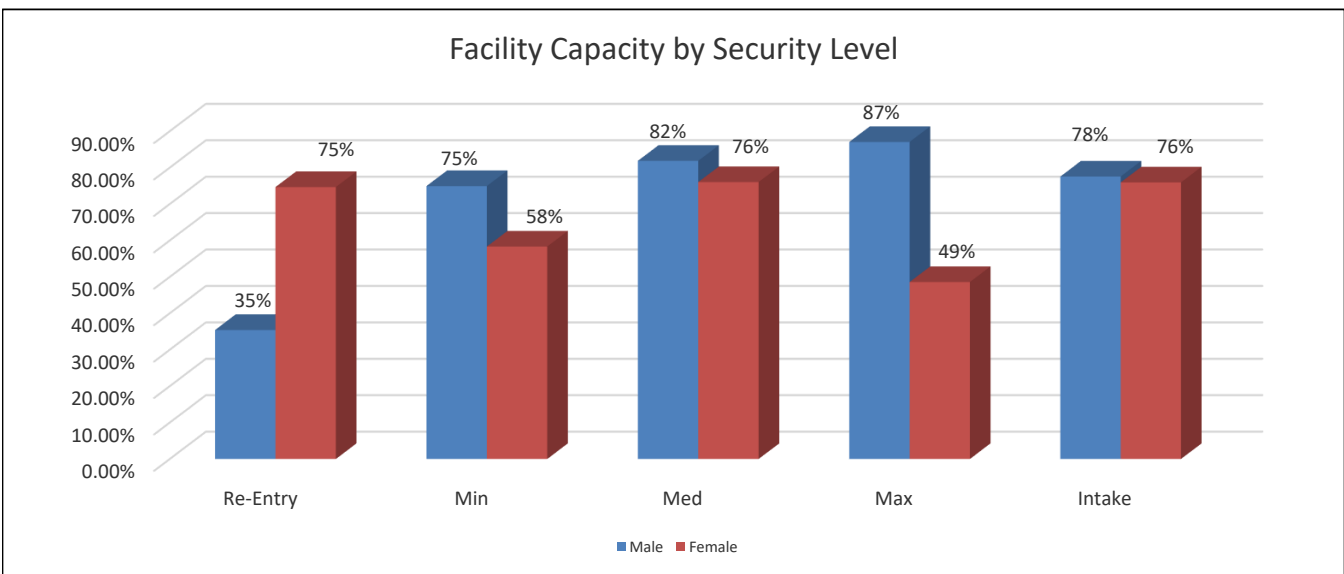
October 1st Total Population:
36 HO Offenses or Missing Data

**INDIANA DEPARTMENT OF CORRECTION
HEA 1006: Supplemental Report for October 2020**



Previous Two Months of Admissions				
Month	New Commitments	Tech Violations	Other*	TOTAL ADMISSIONS
October	311	219	0	530
November	321	165	1	487

Previous Two Months of Releases						
Month	Parole	Probation	Discharge	CTP	Other*	TOTAL RELEASES
October	356	244	96	82	17	795
November	346	238	69	91	19	763



*'Other' includes unsentenced, escapes, etc.